

Topical Salve

Sample ID: SA-09082021-3878
 Batch: 2021090804
 Type: Finished Products
 Matrix: Topical - Salve

Received: 09/14/2021
 Completed: 09/21/2021

Client

Hempstock Pharms Limited
 14023 West South Street Road
 Woodstock, IL 60098
 USA
 Lic. #: Grower 1200-75, Processor 1204-86



Summary

Test
 Cannabinoids

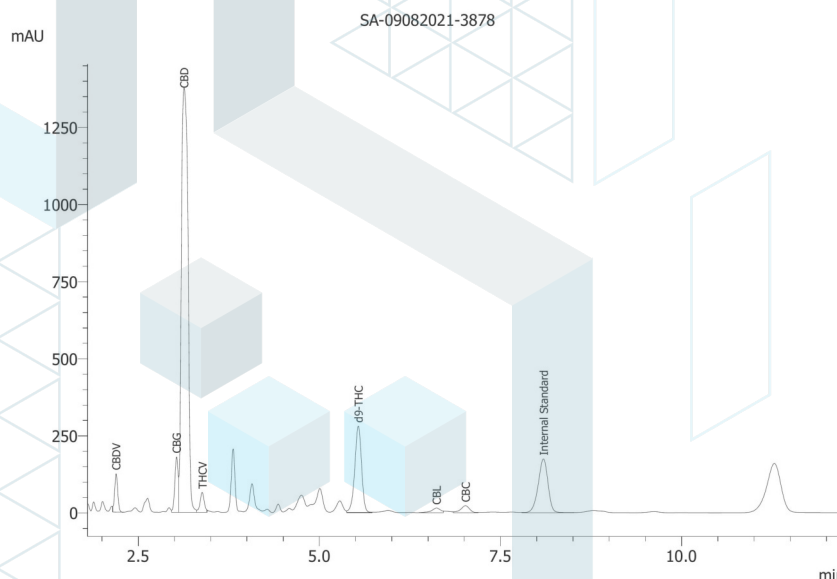
Date Tested
 09/21/2021

Status
 Tested

Cannabinoids by HPLC-PDA

0.144 %	2.66 %	2.90 %	Not Tested	Not Tested	Yes
Total Δ9-THC	CBD	Total Cannabinoids	Moisture Content	Foreign Matter	Internal Marker Recovered

Analyte	LOD (%)	LOQ (%)	Result (%)	Result (mg/g)
CBC	0.00009	0.00028	0.0125	0.125
CBCA	0.00018	0.00054	ND	ND
CBCV	0.00006	0.00018	ND	ND
CBD	0.00008	0.00024	2.66	26.6
CBDA	0.00004	0.00013	ND	ND
CBDV	0.00006	0.00018	0.0286	0.286
CBDVA	0.00002	0.00006	ND	ND
CBG	0.00006	0.00017	0.0482	0.482
CBGA	0.00005	0.00015	ND	ND
CBL	0.00011	0.00033	0.00911	0.0911
CBLA	0.00012	0.00037	ND	ND
CBN	0.00006	0.00017	ND	ND
CBNA	0.00006	0.00018	ND	ND
Δ8-THC	0.0001	0.00031	ND	ND
Δ9-THC	0.00008	0.00023	0.144	1.44
Δ9-THCA	0.00008	0.00025	ND	ND
Δ9-THCV	0.00007	0.00021	ND	ND
Δ9-THCVA	0.00006	0.00019	ND	ND
Total Δ9-THC			0.144	1.44
Total CBD			2.66	26.6
Total			2.90	29.0



ND = Not Detected; NT = Not Tested; LOD = Limit of Detection; LOQ = Limit of Quantitation; RL = Reporting Limit; Δ = Delta; Total Δ9-THC = Δ9-THCA * 0.877 + Δ9-THC; Total CBD = CBDA * 0.877 + CBD;



09/21/2021

This product or substance has been tested by KCA Laboratories using validated testing methodologies and an ISO/IEC 17025:2017 accredited quality system. Values reported relate only to the product or substance tested. The reported result is based on a sample weight. Unless otherwise stated, results of tests performed on all quality control samples met criteria for acceptance established by KCA Laboratories. KCA Laboratories makes no claims as to the efficacy, safety or other risks associated with any detected or non-detected amounts of any substances reported herein. This Certificate of Analysis shall not be reproduced except in full, without the written approval of KCA Laboratories. KCA Laboratories can provide measurement uncertainty upon request.



ISO/IEC 17025:2017 Accredited
 Accreditation #108651

